

A dense, vibrant background of tropical palm leaves in various shades of green, from bright lime to deep forest green, set against a dark, almost black background. The leaves are long and slender, with some showing signs of being eaten or damaged.

Week 1

Recommended for April 6-10

A dense, vibrant background of tropical palm fronds in various shades of green, from bright lime to deep forest green, set against a dark, almost black background. The fronds are layered and overlapping, creating a rich, textured effect. A semi-transparent light green rectangular box is centered in the image, containing the word "Readings" in a black, elegant cursive font.

Readings

Nonfiction Reading

“What the flu does to your body, and why it makes you feel so awful”

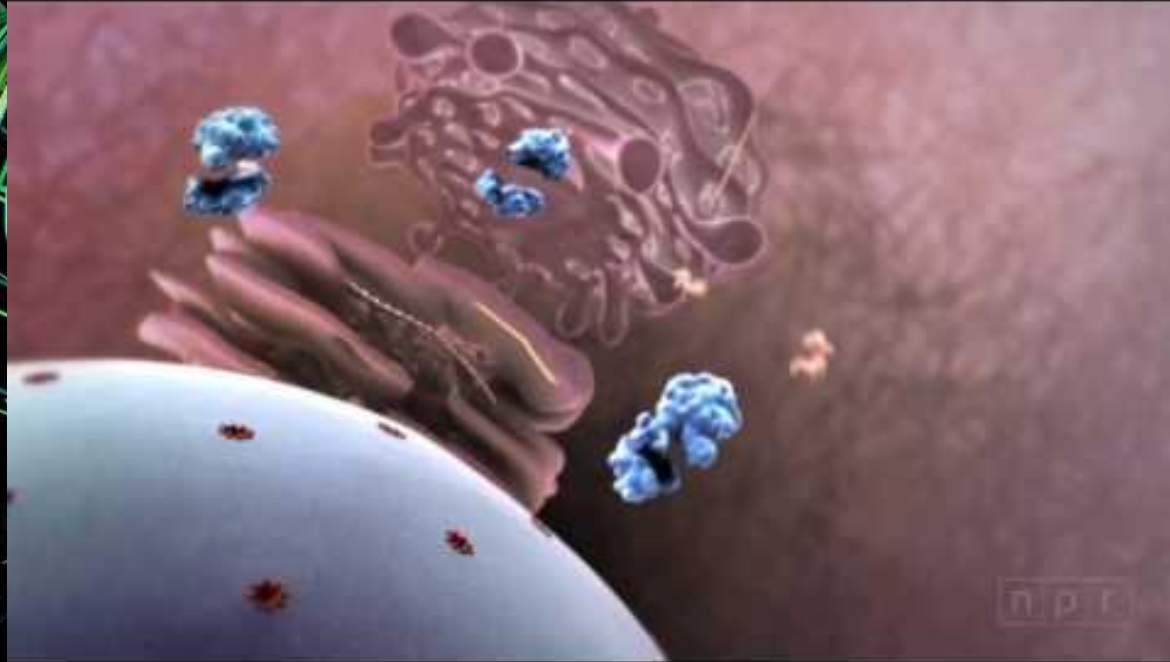
{2018} Laura Haynes

Read the article, pay special attention to how headings and subheadings can help you navigate a nonfiction text.

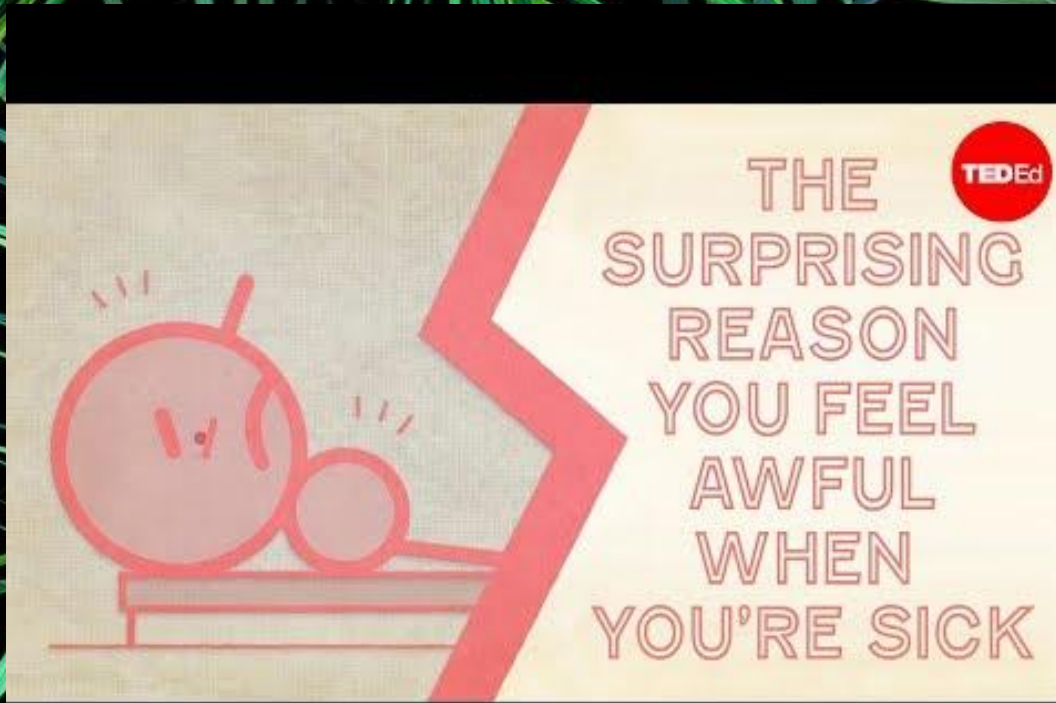
Answer the ACT style multiple choice questions and practice answering questions in complete sentences.

For more information about the way that your body deals with viruses watch the attached videos.

Flu Attack! How a Virus Invades Your Body



The Surprising Reason You Feel Awful When You're Sick



Fiction Reading

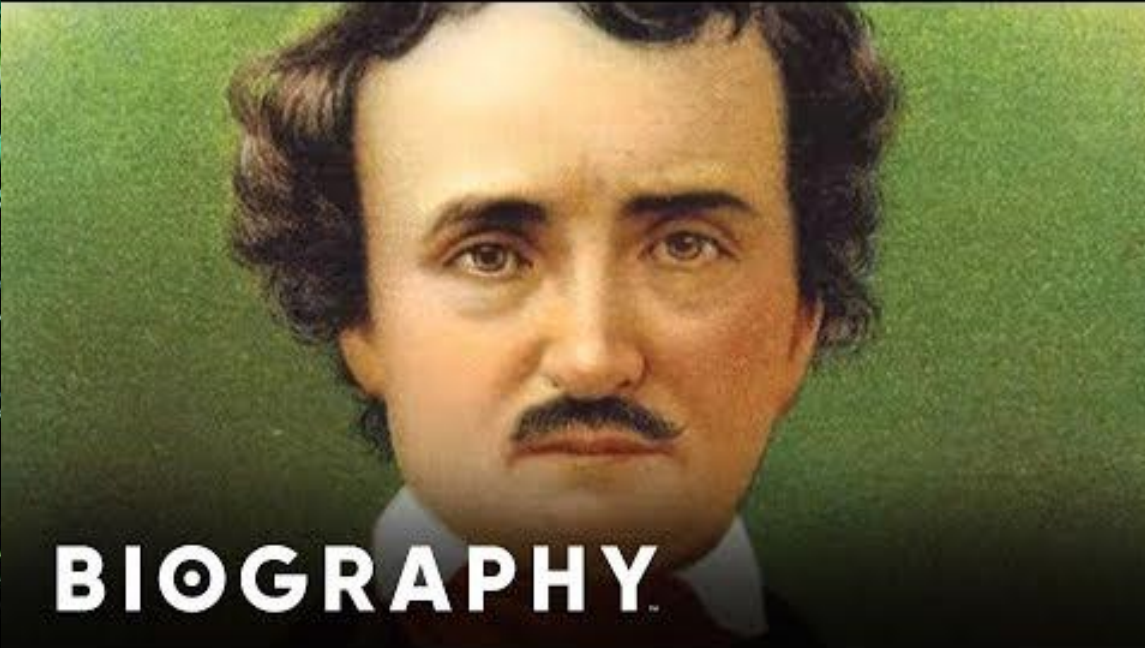
“The Masque of the Red Death” (1842) Edgar Allan Poe

Read the story, pay special attention to how the author uses color to symbolize the different phases of life.

Answer the ACT style multiple choice questions and practice answering questions in complete sentences.

For more information on the author as well as a short film in two parts based on the story see the attached videos.

Mini BIO - Edgar Allan Poe



The Masque of the Red Death Short Film (2007)



Poetry Reading

“Mercy”

{2016} Teri Ellen Cross Davis

Read the poem, pay special attention to how the author uses figurative language to help the reader visualize the setting.

Answer the ACT style multiple choice questions and practice answering questions in complete sentences.

Watch the attached videos to spark thinking and start a discussion with your family and friends.

Evil, Pain, Suffering = No God? A C.S. Lewis Response



How do you think the speaker of “Mercy” would react to this video?
Do they agree with the video that moral good could not exist without moral evil?
Does this video explain how seemingly random tragedies, such as the cancer diagnosis in the poem, can exist in the world?

Nurses Fight “Compassion Fatigue”



How do you think the stress of the hospital environment emotionally affects nurses?
How can nurses protect themselves from “burnout”?
Nurses are absent from the poem, how do you think they would respond to the events described in the poem?



Writing

The Moth?

The Moth is a storytelling competition that hosts live events around the world and encourages people to tell their stories. We will use The Moth to help us tell our stories. Write these down in a journal, a note on your phone, or a google doc. Don't stress out about getting every detail right or grammar rule right the first time, just tell your story. If you like it, tweak it, make it better and tell it to a friend or family member. One day your children and grandchildren will study Covid-19 in history class and will want to hear your stories.

[The Moth Website](#)

[The Moth on Youtube](#)

[The Moth Podcast](#)

Moth Story of the Week: "The Bad Haircut"



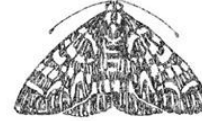
Writing 1

Write a narrative about your life or experiences.

Don't like this prompt?
That's okay, write about whatever you want to write about.

The important part is that you write, and then read that writing. The best way to become a better writer is to READ and to WRITE.

THE MOTH



FIRST LINES PROMPT

Tell us about a time you had to learn the hard way.

#MothFirstLines

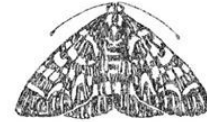
Writing 2

Write a narrative about your life or experiences.

Don't like this prompt?
That's okay, write about whatever you want to write about.

The important part is that you write, and then read that writing. The best way to become a better writer is to READ and to WRITE.

THE MOTH



FIRST LINES PROMPT

Tell us about a time
you set the trend.

#MothFirstLines